

# Smart Device Simple World

## Thank you for choosing the HUAWEI Mobile WiFi

Supported functions and actual appearance depend on the specific models you purchased. The illustrations are provided for your reference only. For details about the model you selected, consult your service provider.

This guide briefly describes the functions of the Mobile WiFi. For details about how to set management parameters, see help on the web admin page.

**Copyright © Huawei Technologies Co., Ltd. 2011. All rights reserved.**

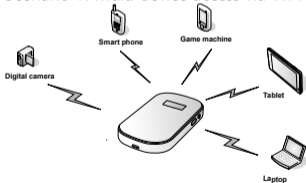
THIS DOCUMENT IS FOR INFORMATION PURPOSE ONLY, AND DOES NOT CONSTITUTE ANY KIND OF WARRANTIES.

# Getting to Know the HUAWEI Mobile WiFi

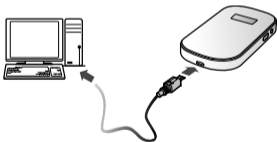
## Connection Scenarios

A Wi-Fi enabled device or computer can be connected to the Internet through the Mobile WiFi. The actual connection procedure depends on the operating system of the Wi-Fi enabled device or computer. You can connect up to 5 Wi-Fi enabled devices to your Huawei Mobile WiFi at one time.

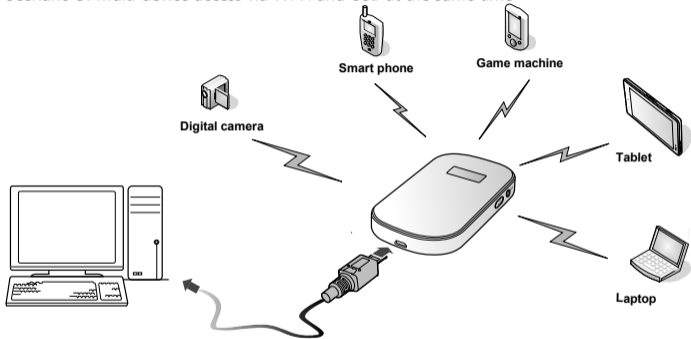
### Scenario 1: Multi-device access via Wi-Fi



### Scenario 2: One-device access via USB



### Scenario 3: Multi-device access via Wi-Fi and USB at the same time

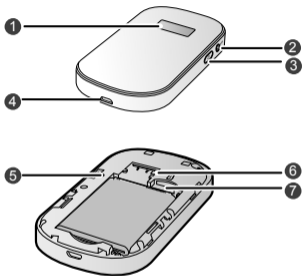


## Appearance

No.	Item
1	Screen
2	WPS button
3	Power button
4	USB port
5	Reset button
6	SIM card slot
7	microSD card slot

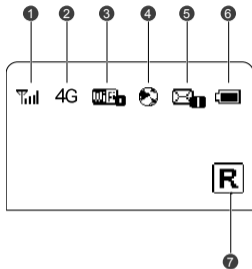
### Note:

- Wi-Fi: Wireless fidelity
- WPS: Wi-Fi protected setup



## Screen

No.	Item
1	Signal strength
2	Network
3	<ul style="list-style-type: none"><li>• Wi-Fi enabled</li><li>• Number of devices connected</li></ul>
4	Internet connection status
5	<ul style="list-style-type: none"><li>• New messages</li><li>• Number of new messages</li></ul>
6	Battery level
7	International roaming state



## Before You Start

### Installing the SIM Card and the Battery

**Caution:** Do not use any SIM card that is not standard or is incompatible with the Mobile WiFi. Otherwise, the Mobile WiFi may be damaged.



Insert the SIM card in the card slot. Be sure that the SIM card is facing in the right direction, as shown in figure 2 and then slide the SIM card into the slot.

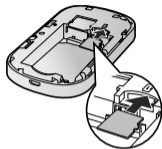


## Installing the microSD Card

Install the microSD card as shown.

### **Note:**

- The microSD card is an optional accessory. If a microSD card did not come with your Mobile WiFi, you may purchase one yourself.
- To remove the microSD card, press in the card gently. The microSD card will slip out for removal.
- Do not remove the microSD card when it is in use. Doing so may damage the card and the Mobile WiFi, and data stored on the card may be lost.

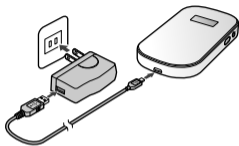


## Charging the Battery

**Note:** If the battery has not been used for a long time, it must be charged first.

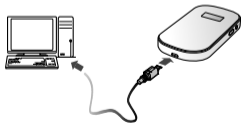
### Method 1: Using the charger

**Caution:** Only use chargers compatible with the Mobile WiFi and provided by a designated manufacturer. Use of an incompatible charger or one from an unknown manufacturer may cause the Mobile WiFi to malfunction, fail, or could even cause a fire. Such use voids all warranties, whether expressed or implied, on the product.



### Method 2: Connecting to a PC for charging

Connect the Mobile WiFi to a PC using a compatible data cable.






## Accessing the Internet via Wi-Fi Connection

**Note:** The Huawei Mobile WiFi is configured with default settings. To access the Web Admin page and change the Administrator settings, please see Page 12.

### Step1: Power on the Mobile WiFi

Press and hold  until the screen lights up. The Mobile WiFi is powered on.

**Note:** Press and hold  again to power off the Mobile WiFi.



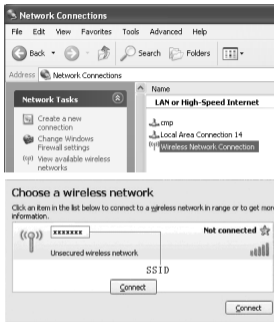
### Step2: Establish a Wi-Fi Connection (The following Instructions are for a computer with Windows® XP operating system)

1. Make sure that the Wi-Fi is enabled.

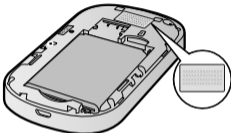
2. Select **Start > Control Panel > Network Connections > Wireless Network Connection**.

**Note:** To set up a Wi-Fi connection, the PC must have a wireless network adapter installed. If **Wireless Network Connection** is displayed, a wireless network adapter is available. Otherwise, check to make sure you have a wireless network adapter installed.

3. Click **View available wireless networks** to display a list of wireless networks available.
4. Select the SSID of the network that matches the SSID found on the Mobile WiFi's label, and then click .
5. The Wireless Network Connection dialog box is displayed. Enter the network key found on the Mobile WiFi's label in the dialog box.



- Wait until the wireless connection icon is displayed in the status area in the lower right corner of the PC screen.



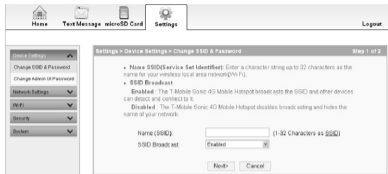
## Accessing the Web Admin Page

1. Ensure your Wi-Fi enabled device or computer is connected to the Mobile WiFi.
2. Open an Internet browser and enter `http://192.168.1.1` in the address bar.
3. Enter the password and log in to the web admin page.

**Note:** Once you have established a connection to the Huawei Mobile WiFi, you can log into the Web Admin page to change administrator settings. The default password is **Admin**.

## Configuring the SSID

1. Click **Settings > Device Settings > Change SSID & Password**.
2. Change the default SSID in the **Name (SSID)**: textbox.
3. **Enabled/Disabled** the SSID Broadcast.
  - **Enabled:** The device broadcasts the SSID. Users can see the Mobile WiFi.
  - **Disabled:** The device does not broadcast the SSID. To access the Mobile Wi-Fi, the user must obtain the SSID of the Mobile Wi-Fi, allowing improved WiFi security.



4. Click **Next**.
5. Select **802.11 Security** mode and Encryption Mode.
  - The default value of the **802.11 Security** is **WPA/WPA2-PSK**.
  - The default value of the **WAP Encryption** is **AES+TKIP**.
  - The default value of the **WAP Pre-Shared key** is found on the Mobile WiFi label.
  - Change the **WAP Pre-Shared key**.
6. Click **Finish**.

## Changing the Admin UI Password

1. Choose **Setting > Device Settings > Change Admin UI Password**.
2. Enter the current Admin password, and then enter the new password and confirm it.
3. Click **Modify**.

**Note:** The default password is **Admin**.

Settings > Device Settings > Change Admin UI Password

You can modify the Admin UI password on this page. The password cannot be empty and contain no more than 15 characters.

Password cannot contain the following characters: , " ; & \ < > + % ' ? .

Current Password:

New Password:

Confirm Password:

## Daily Use

### Power Saving Mode

If no operation is performed on the Mobile WiFi within a preset period, the screen turns off. Press any key to light up the screen.


If the Mobile WiFi is not connected to a power source, the Wi-Fi is disabled automatically when no data is transmitted within a preset period (10 minutes by default). Press any key to enable the Wi-Fi again.

### Validating the PIN Code

If PIN code protection is enabled, log in to the web management page and follow the prompts to enter the correct PIN code. The default PIN code is "1234". If you are prompted for the PUK code, please contact your service provider.

## Establishing a WPS Connection

If a Wi-Fi client connected to the Mobile WiFi supports the WPS function, a network key will be automatically generated without manual input. To establish a WPS connection, perform the following steps:

1. Power on the Huawei Mobile WiFi.
2. Power on your Wi-Fi enabled device.
3. Enable the WPS function of the Mobile WiFi by pressing and holding the WPS  button.
4. Enable WPS on your Wi-Fi enabled device.

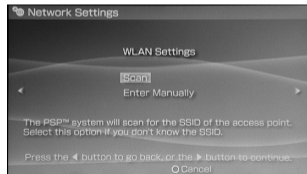
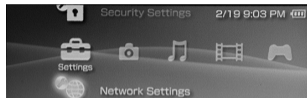
Note: For steps to setup Wi-Fi on your device using WPS, see the user guide of your 3rd party equipment.



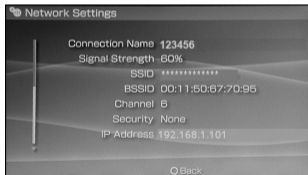
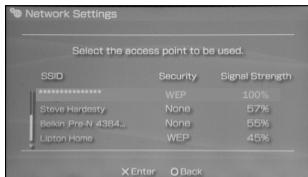


## Example 1: Wi-Fi Connection to Game Machine (Sony PSP)

1. Turn on the PSP WLAN switch.
  2. Select **Settings** > **Network Settings**.
  3. Select **Infrastructure Mode** to connect to your local Wi-Fi access point.
  4. Select **New Connection** to specify an easy to remember connection name.
  5. Select **Scan** to detect all networks within range. The access point list is displayed.
  6. Select the SSID in the same way as you did for the Mobile WiFi. First press the ► button of your game machine to confirm the SSID and then press it again to input the Wi-Fi key.
- **SSID:** The Wi-Fi name of the Mobile WiFi.



- **WEP:** The Wi-Fi key of the Mobile WiFi.
  - The default SSID and key label are affixed to the Mobile WiFi.
7. Press the ► button of your game machine to continue, and then press the X button to save the settings.
  8. Select **Test Connection** to check the connection.
  9. Go to **Internet Browser**.



## Example 2: Wi-Fi Connection to a Smart Phone (iPhone)

1. Select **Settings** > **Wi-Fi**, and then turn on Wi-Fi.
2. Automatically detect the networks in range and display the access point list.
3. Select a network that the Mobile WiFi is using.
4. If necessary, enter a password and tap **Join**. (Networks requiring a password appear with a lock icon.)

**Note:** Some Wi-Fi clients such as iTouch, PS3 and NDS can also access the Internet via the Mobile WiFi. For details, see the user guides of the Wi-Fi clients.



## Tips

If the Mobile WiFi is placed in an environment with poor ventilation, it may overheat after extended use. When the Mobile WiFi overheats, it will switch off and disconnect from the network automatically to protect itself. If this happens, place the Mobile WiFi in a well-ventilated location, then restart the Mobile WiFi.

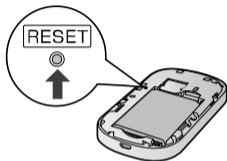
If you are experiencing difficulties using the Mobile WiFi, try the following:

- See help on the web management page.
- Restart the Mobile WiFi.
- Restore the factory defaults.
- Contact your service provider.

## Restoring Factory Defaults

If you forget the changes you have made to some parameters, you may restore factory defaults and reconfigure the Mobile WiFi. To restore the factory defaults, press and hold the **RESET** button until the device displays RESETTING. All factory default settings are successfully restored.

**Note:** Restoring factory defaults deletes all personal configuration settings and restores all web-based management settings and parameters to their default values.



Version: V100R001\_01 Part Number:xxxx