

HELIX TV Terminal



10-15 minutes

Installation guide

Version française au verso

Hardware included in the box

Basic hardware

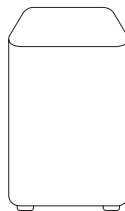
Helix TV Terminal Voice remote control (AA batteries included)

Power supply HDMI cable

Before you begin

Activate the Helix Fi Gateway

The Helix Fi Gateway must be activated and configured before the Helix TV Terminal can be installed. Already done? You can begin the installation of your Terminal.



Watch the explanatory video

The video shows all the installation steps and guides you through the configuration of your Terminal. Watch it at your own pace!



go.videotron.com/tv-installation

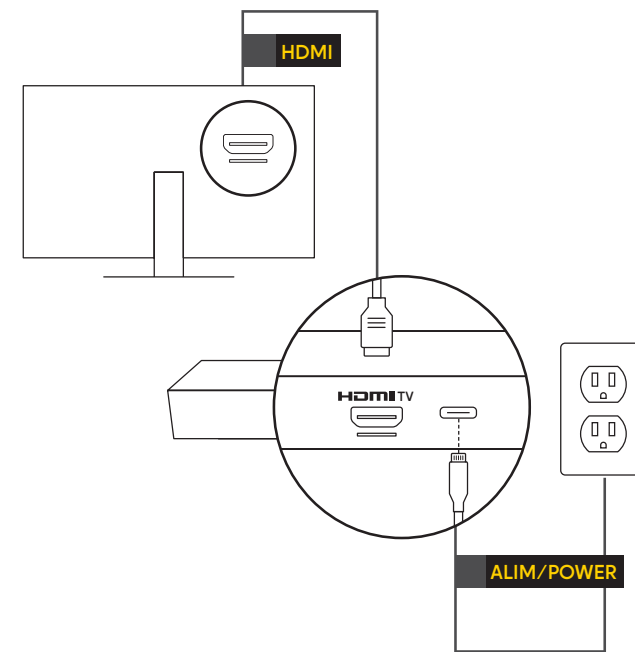


Tip: For optimal operation, if your Terminal is located **within 4 ft (1.20 m) of the Helix Fi Gateway**, we recommend connecting it directly to the Helix Fi Gateway using the **Ethernet cable** included in the Terminal box.

Installation steps

1. Plug in your Terminal

- ✓ Plug the HDMI cable into the HDMI port on the Terminal and into an HDMI port on your TV.
- ✓ Plug the power supply into your Terminal and into a power outlet that is not connected to a dimmer or switch.
- ✓ Wait for the Terminal indicator light to flash.

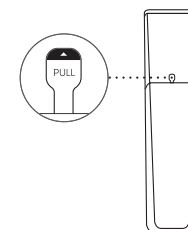


2. Turn on your TV

- ✓ Turn on your TV using **your TV's remote** control and select the HDMI source you chose in step 1.

3. Use the voice remote

- ✓ Remove the plastic tab on the back of the voice remote.

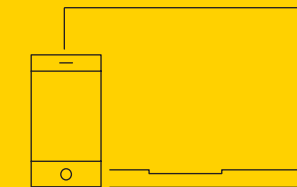


4. Follow the on-screen instructions

- ✓ Complete the setup using the voice remote.



Your Helix TV Terminal is now functional!



Need help?

Find all our installation tips at go.videotron.com/tv



IMPORTANT NOTICE ON LEGAL WARRANTY. The Consumer Protection Act provides for a warranty on all goods you buy or lease from a merchant. These goods must be: (1) fit for the purposes for which goods of that kind are ordinarily used (Section 37 of the Act); and (2) durable in normal use for a reasonable length of time, having regard to their price, the terms of the contract, and the conditions of their use (Section 38 of the Act). For more information on the legal warranty, refer to the Office de la protection du consommateur's website, at www.opc.gouv.qc.ca/en.

STATEMENT FROM ISED. This device contains licence-exempt transmitter(s)/receiver(s) that comply with Innovation, Science, and Economic Development Canada's RSS(s). Operation is subject to the following two conditions: (1) This device may not cause interference; and (2) this device's user(s) must accept any interference, including interference that may cause undesired operation of the device.